



Academic Misconduct
Important information for
your time at UW-Madison

In this video, we'll discuss:



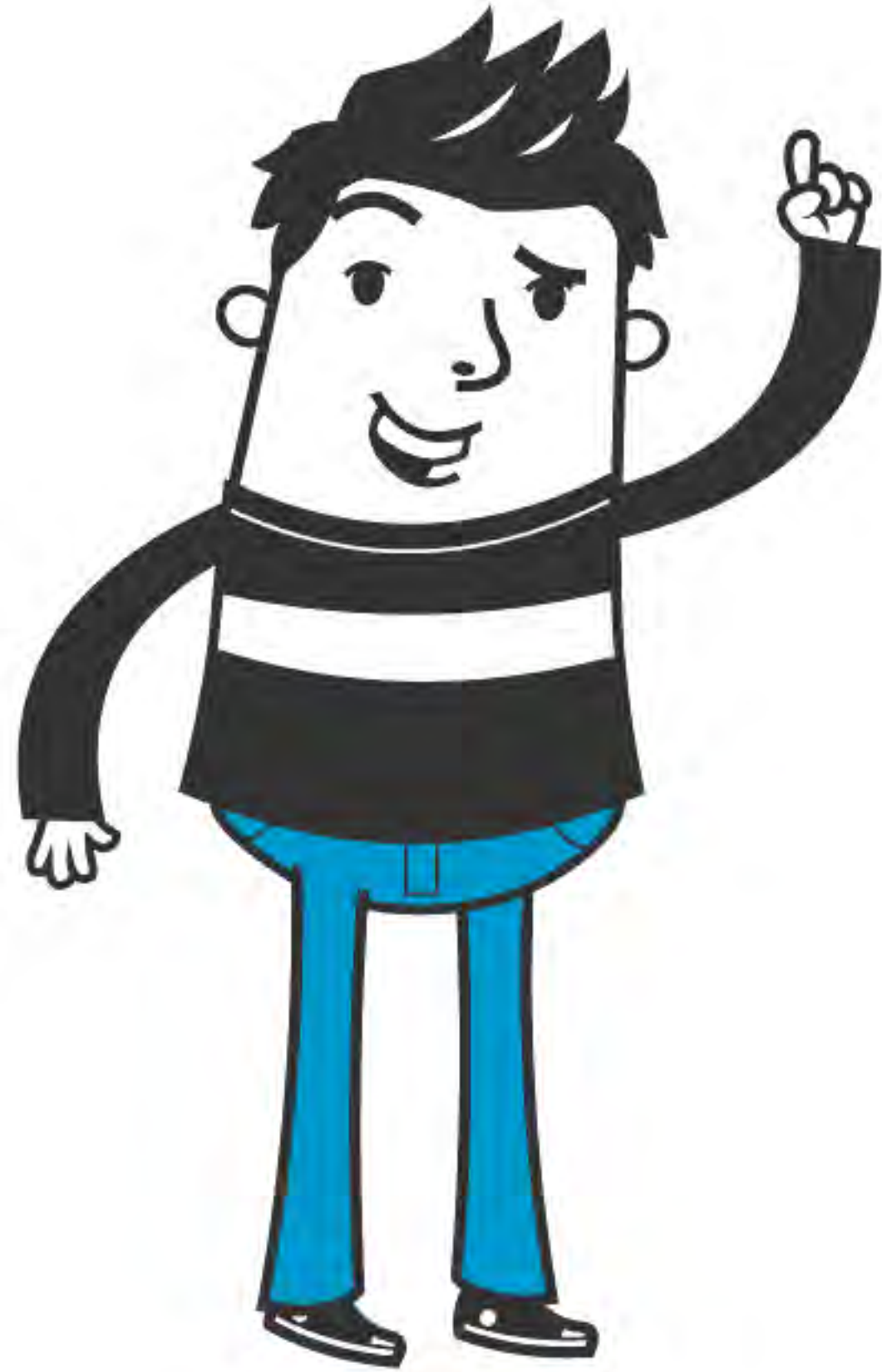
Defining
Academic
Misconduct



The Importance
of Academic
Integrity at UW

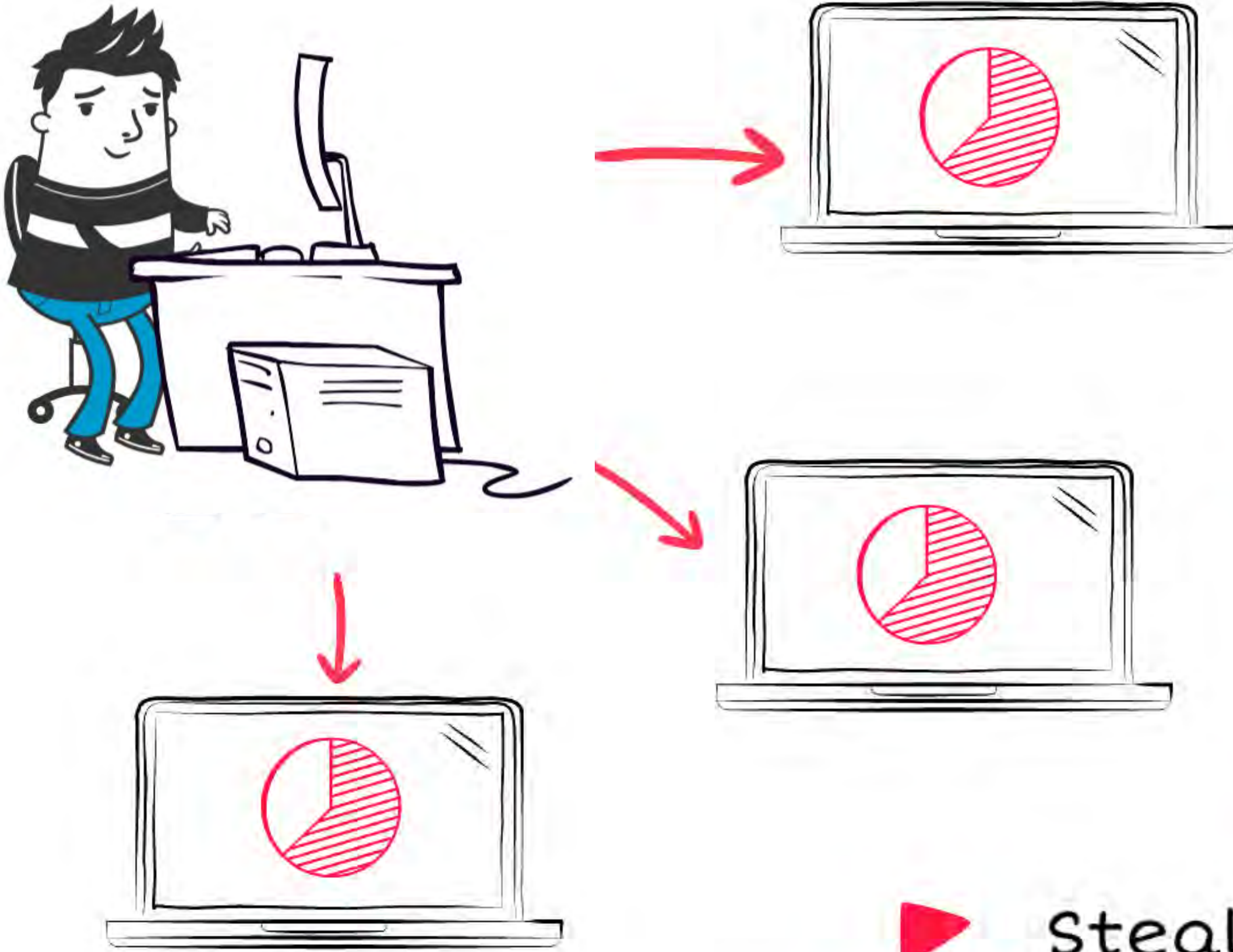


Resources
Available to help
you



What is academic misconduct?

Examples of Academic Misconduct



▶ Sharing your work or engaging in group work contrary to rules.

▶ Plagiarism: paraphrasing or copying directly without citing or crediting the source.

▶ Cheating on an exam

▶ Stealing exams or course materials

▶ Sending/receiving text messages with answers during exam

Additional Examples

- ▶ Using a calculator in an exam when prohibited.
- ▶ Signing another person's name.
- ▶ Tampering with a lab experiment.
- ▶ Falsifying data on a research project.
- ▶ And more. When in doubt, ask!



The Importance of Academic Integrity at UW-Madison

The Importance of Academic Integrity

Academic Integrity is critical to the mission of the University of Wisconsin-Madison, a research institution with high academic standards and rigor.

All members of the University community play a role in fostering an environment in which student learning is achieved in a fair, just, and honest way.

The Importance of Academic Integrity

The University of Wisconsin-Madison takes academic misconduct allegations very seriously.

If an instructor suspects a student has engaged in academic misconduct, then the instructor will contact the student and ask them to explain their work.

"Academic Integrity." Office of Student Conduct and Community Standards, conduct.students.wisc.edu/academic-integrity/. Accessed Jul. 2019.

The Importance of Academic Integrity

If the instructor still believes academic misconduct occurred after meeting with the student, they will determine the consequences, known as sanctions.

One or multiple sanctions may be imposed.

The Importance of Academic Integrity

Potential sanctions range from oral reprimands to failing assignment grades, removal from course, suspension, probation, and potential expulsion from the University.

For more information, visit:

<http://conduct.students.wisc.edu/academic-integrity>



Campus Academic Resources

To help you understand and avoid academic misconduct



THE WRITING CENTER

University of Wisconsin – Madison

<http://writing.wisc.edu>

- ▶ Help understanding assignments and expectations for academic writing.
- ▶ Help using sources, citations, quoting, and paraphrasing in written work.
- ▶ Help planning longer research papers.
- ▶ Help available via appointments, drop-in advising, workshops, & more.

Where can I learn more?

The rest of
your Academic
Orientation
Module

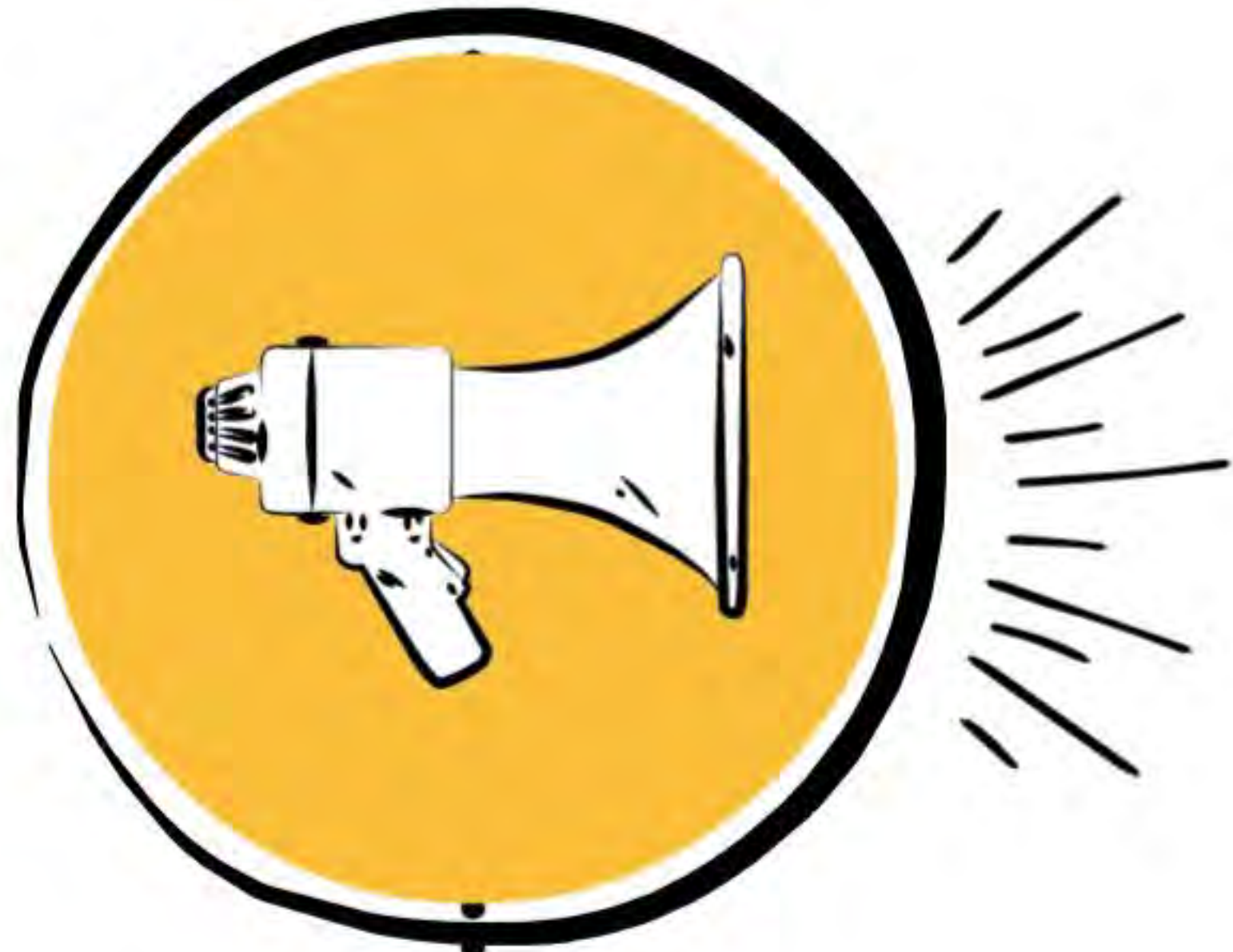
Emails
from
Campus

Your Exchange
or VISP
advisor

Search on
www.wisc.edu

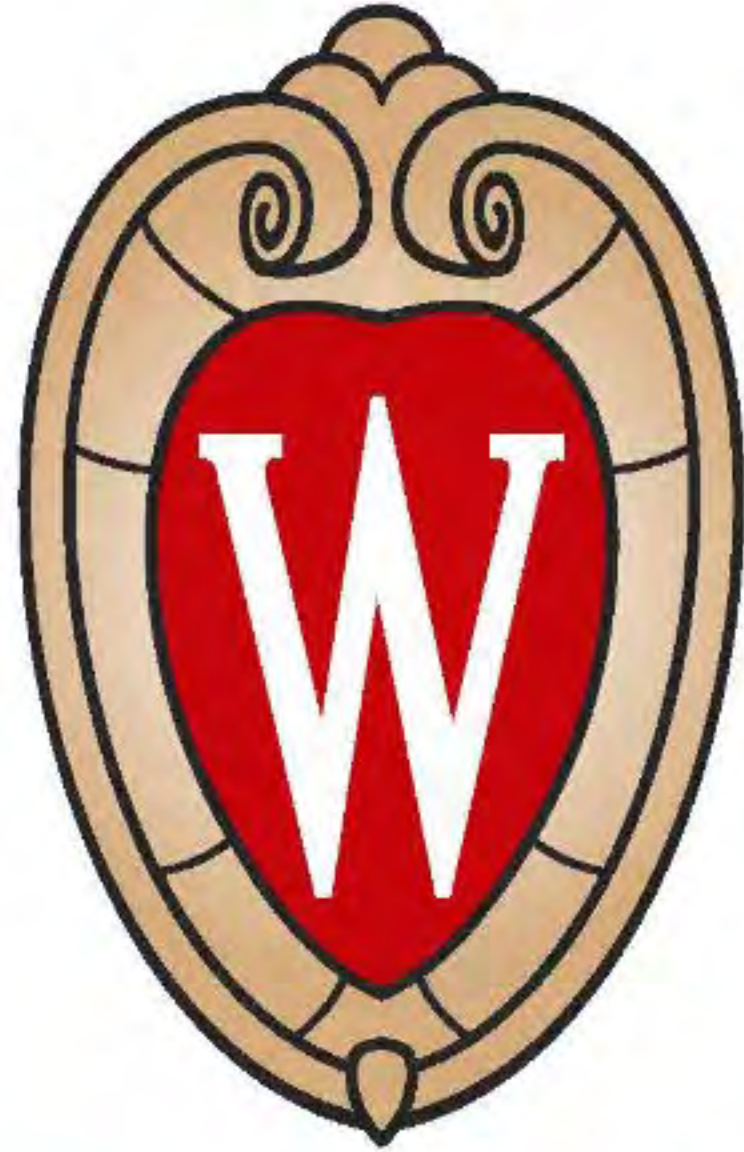
Your
Handbook





P.S.

Don't forget to check out the rest of your online orientation.



WISCONSIN
UNIVERSITY OF WISCONSIN-MADISON